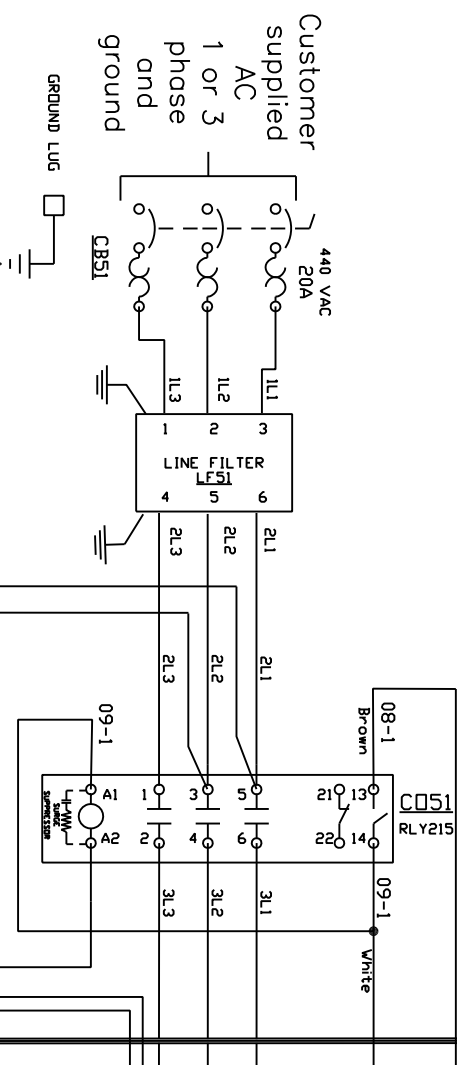


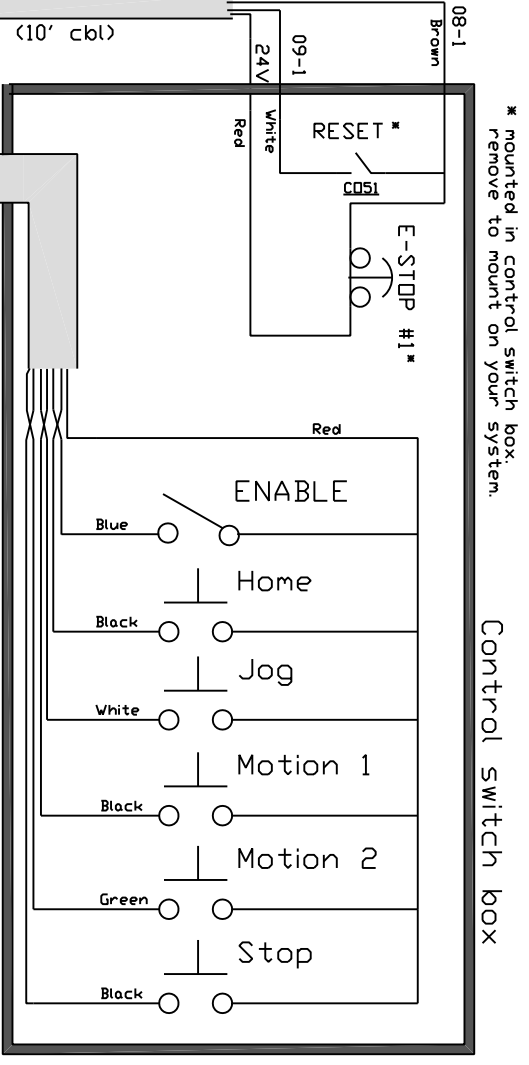
Note MMI and 2 cables sold separately as MM1K-8050 or MM1K-8070

Off panel

On panel



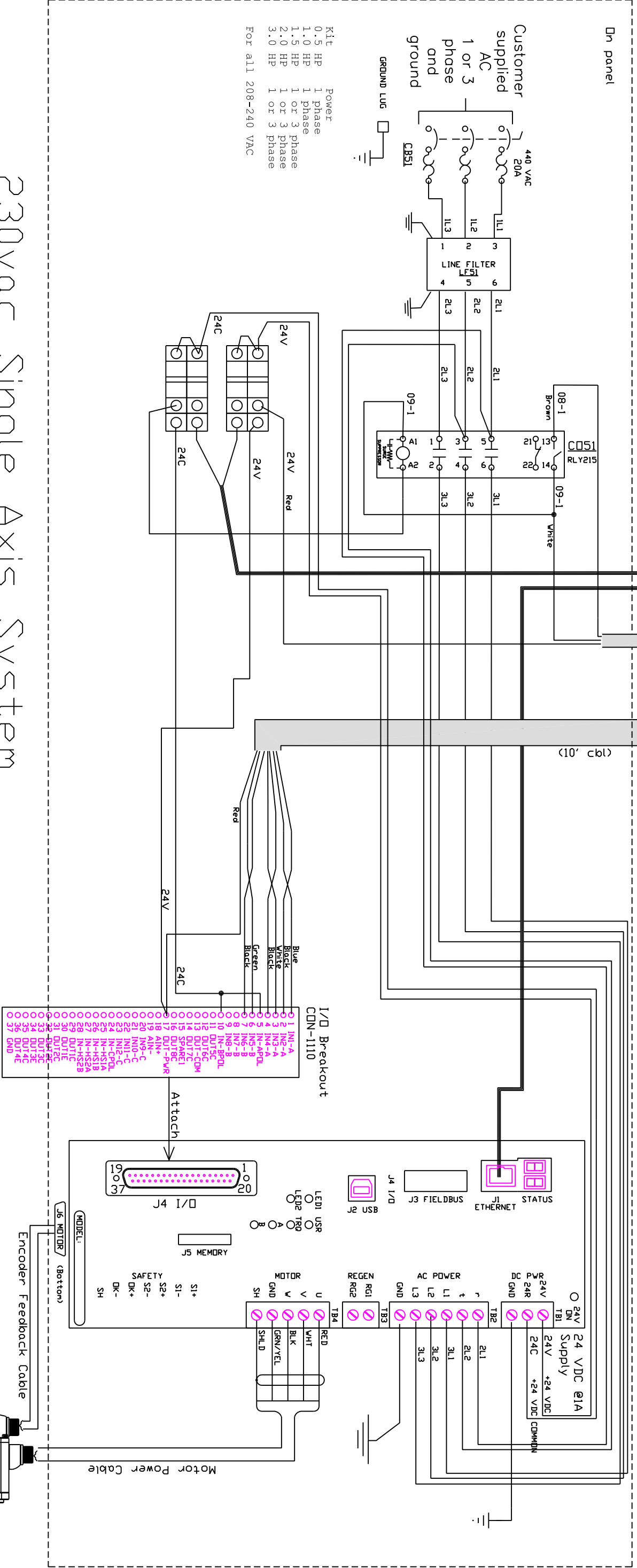
Kit Power:  
 0.5 HP 1 phase  
 1.0 HP 1 phase  
 1.5 HP 1 or 3 phase  
 2.0 HP 1 or 3 phase  
 3.0 HP 1 or 3 phase  
 For all 208-240 VAC



\* mounted in control switch box. Remove to mount on your system.

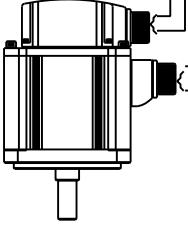
Control switch box

Detach from panel.



# 230vac Single Axis System

- Notes:
1. All AC power wire 14 AWG black.
  2. All 24 VDC wiring 18 AWG blue or blue/wht.
  3. All ground wires 14 AWG green/yellow.
  4. Cable color codes as indicated.
  5. E-Stop and Reset are mounted in control switch box. Remove from box for use on your machine.
  6. E-Stop function: When E-Stop PB open bus power contactor opens. To reset close E-Stop PB then momentarily close Reset PB, until contactor engages.



NOTES	REVISONS	DATE	DESIGNER	DRAWN BY	APPROVER
1	B				
	C				
	D				
	E				

DATE	4/15/2015	DESIGNER	JMB	DRAWN BY	JWB	APPROVER	
ORMEC SYSTEMS CORP		230V Indexer Kit		Single Axis		Rec. Wiring	
ACAD 14	D	XDK230S1-1					