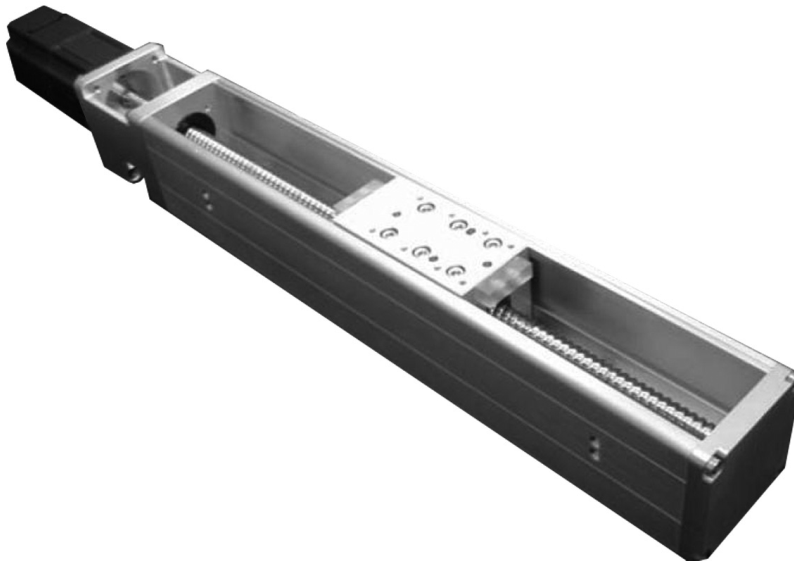


SGB Series Single Guides Ball Screw Module

- Compact size
- Simplicity in design with built in concealed limit switches
- Assemble with servo motor



SGB54 Series

Datasheet

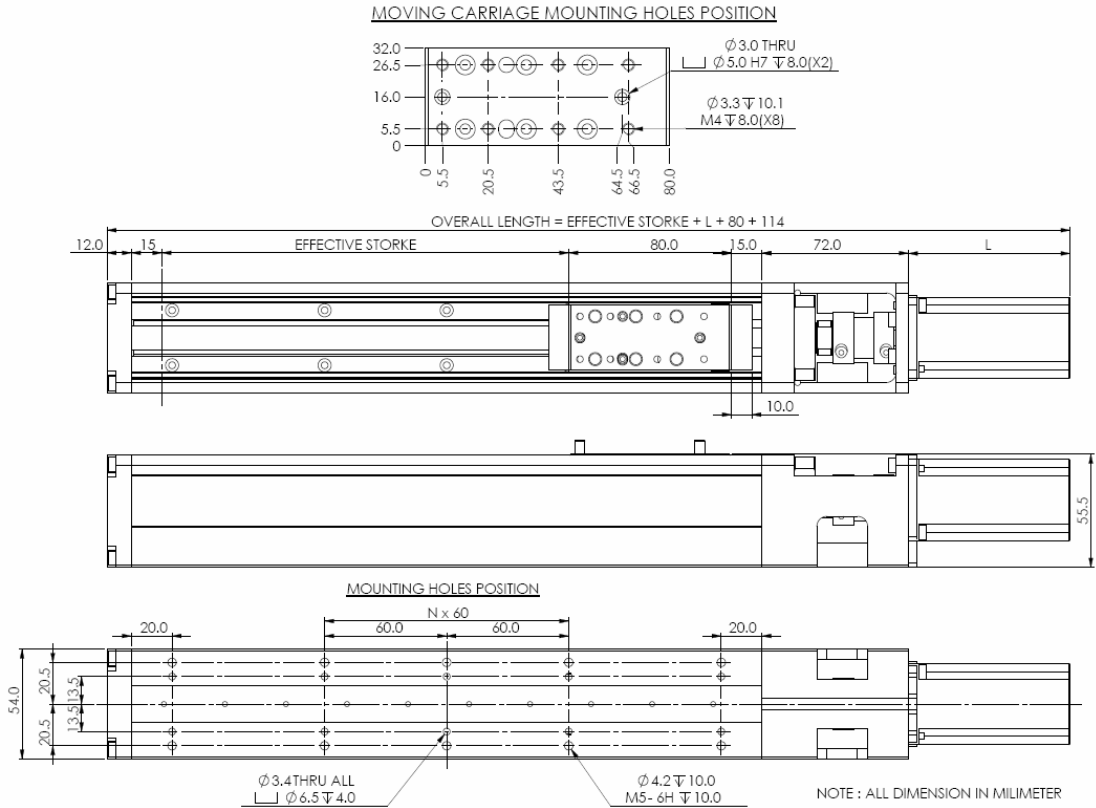
Specifications	Model	ARM40-50	ARM40-100	ARM40-50-B	ARM40-100-B
	Rated Torque, Nm		0.159	0.318	1.159
Peak Torque, Nm		0.477	0.955	0.477	0.955
Rated Speed, rpm		3000			
Maximum Speed, rpm		5000			
Motor Mass, kg		0.40	0.52	0.75	0.87
Motor Length, L mm		83.0	100.0	119.50	136.50

***Please refer to ARM Series Datasheet for more detail of our Rotary Servo motors.*

Notes

- *All servo motors are supplied with 2000 lines incremental rotary encoder*
- *Standard class ball screw tolerance grade, T7*
- *Ball screws are supplied with 2% preload*
- *Computed resolution of module with 2000 lines incremental encoder after quadrature, with 10mm ball screw lead is 1.0 μ m*
- *Please contact us for a customized solution if you are unable to find one here*

Dimensional Drawing



Specification Model	Effective stroke (mm)	Body mass (kg)	Moving mass (kg)	Mounting pitch (N x 60mm)
SGB54	100	1.6	0.4	2
	200	2.0		2
	300	2.4		4
	400	2.8		6
	500	3.2		8

Part Numbering

	Motor size (type)	Effective stroke (mm)	Ball screw pitch (mm)	¹ Cover option (type)
SGB54	- ARM40-50, ARM40-100, ARM40-50-B or ARM40-100-B	- 100 – 500	- 10.0	- C

Example : SGB54-ARM40-50-B-100-10-C

¹ C = Conventional cover type

SGB72 Series

Datasheet

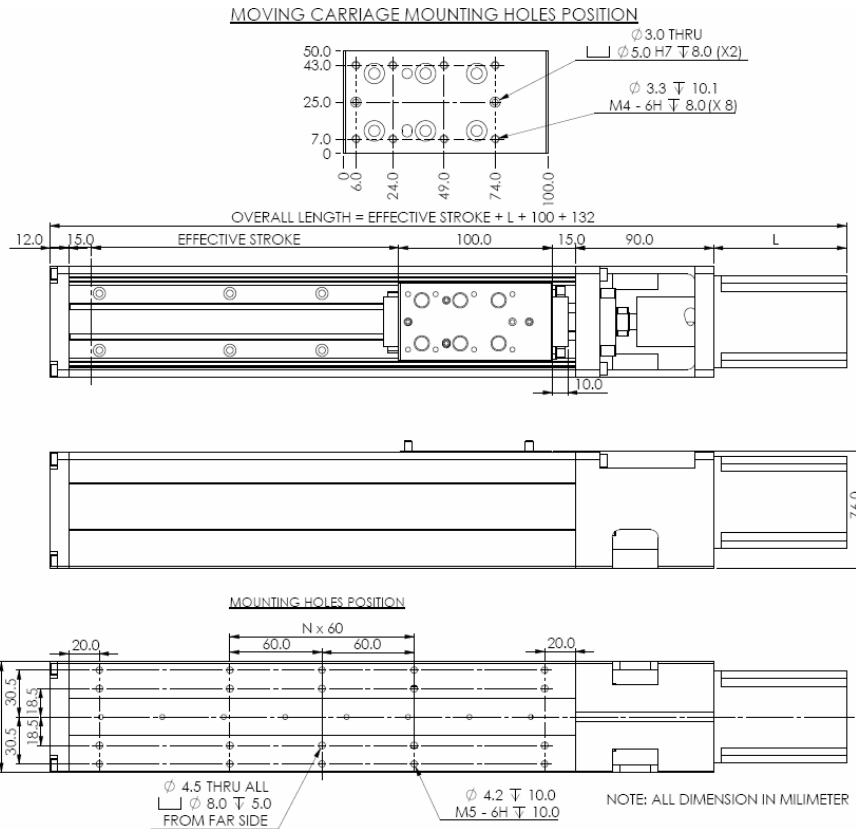
Specifications	Model	ARM60-200	ARM60-400	ARM60-200-B	ARM60-400-B
	Rated Torque, Nm		0.637	1.274	0.637
Peak Torque, Nm		1.912	3.822	1.912	3.822
Rated Speed, rpm		3000			
Maximum Speed, rpm		5000			
Motor Mass, kg		1.11	1.63	1.49	2.05
Motor Length, L mm		106.00	134.00	146.00	174.00

***Please refer to ARM Series Datasheet for more detail of our Rotary Servo motors.*

Notes

- *All servo motors are supplied with 2500 lines incremental rotary encoder*
- *Standard class ball screw tolerance grade, T7*
- *Ball screws are supplied with 2% preload*
- *Computed resolution of module with 2500 lines incremental encoder after quadrature, with 10mm ball screw lead is 1.0 μ m*
- *Please contact us for a customized solution if you are unable to find one here*

Dimensional Drawing



Specification Model	Effective stroke (mm)	Body mass (kg)	Moving mass (kg)	Mounting pitch (N x 60mm)
SGB72	100	2.8	0.8	2
	200	3.6		3
	300	4.4		4
	400	5.1		6
	500	5.9		8

Part Numbering

	Motor size (type)	Effective stroke (mm)	Ball screw pitch (mm)	¹ Cover option (type)
SGB54	- ARM60-200, ARM60-400, ARM60-200-B or ARM60-400-B	- 100 – 500	- 10.0	- C

Example : SGB72-ARM60-100-B-100-10-C

¹ C = Conventional cover type