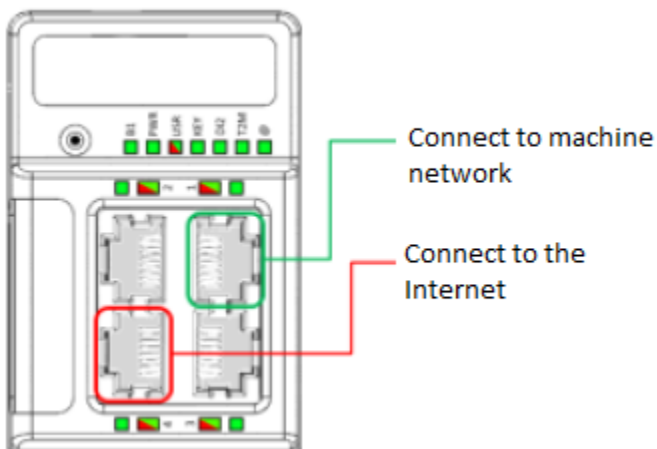


Remote Diagnostics with the eWON Cosy 131 Quick Start

ORMEC offers three versions of remote diagnostic support via the eWON Cosy 131. The eWON Cosy 131 is an industrial VPN LAN router that allows ORMEC personnel to securely access your ORMEC equipment remotely to provide service and support.

ORMEC Part Number	ORMEC Description
RDP-C131-E	Industrial VPN LAN Router with 3 port Ethernet switch Uses a hard wired connection to the Internet
RDP-C131-C	Industrial VPN LAN Router with 3 port Ethernet switch and Cellular NOTE: CELLULAR SERVICE IS NOT INCLUDED, YOU MUST PURCHASE AND INSTALL A SIM CARD FROM A CELLULAR PROVIDER IN THE UNIT. Uses either a hard wired or cellular connection to the Internet
RDP-C131-W	Industrial VPN LAN Router with 3 port Ethernet switch and WiFi. Uses either a hard wired or WiFi connection to the Internet

The eWON Cosy is pre-configured at ORMEC for a hard-wired connection to the Internet (WAN). If you are going to use a direct connection to the Internet all you need to do is connect the WAN port to the Internet and one of the 3 LAN ports to the machine network. This could be a switch in the machine cabinet or directly to an SMLC or XD drive if there is no switch.



The LAN network address of the eWON unit is preconfigured as 192.168.0.99 for connection to an SMLC network. If your equipment is on a different subnet, or if you have XD drives (which default to the 192.168.1.x subnet) then you will need to change the LAN IP address of the eWON using eBuddy as documented in Appendix A.

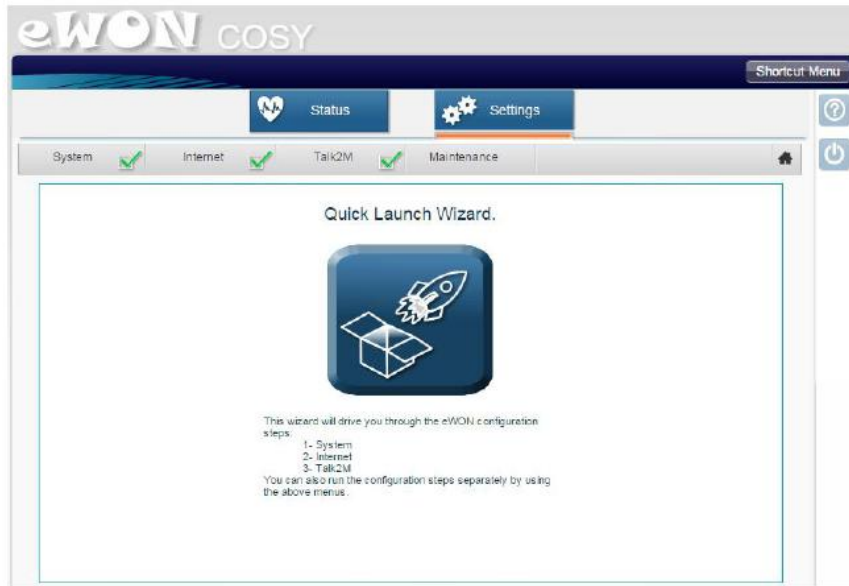
If you are using a hardwired connection to the Internet you are done! The rest of this document covers the configuration for the WiFi and Cellular models.

Remote Diagnostics with the eWON Cosy 131 Quick Start

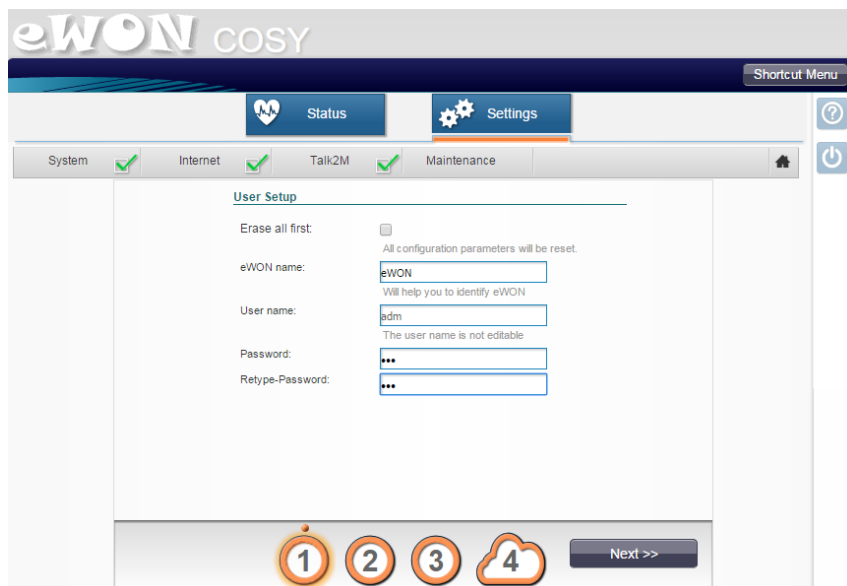
Configuring a WiFi or Cellular connection

Connect a computer to the machine network (LAN). It must be on the same subnet as the eWON. The eWON comes configured from ORMEC with an IP address of 192.168.0.99 so the computer must be on the 192.168.0.x subnet (and not at .99).

Open a web browser and enter 192.168.0.99 as the URL.

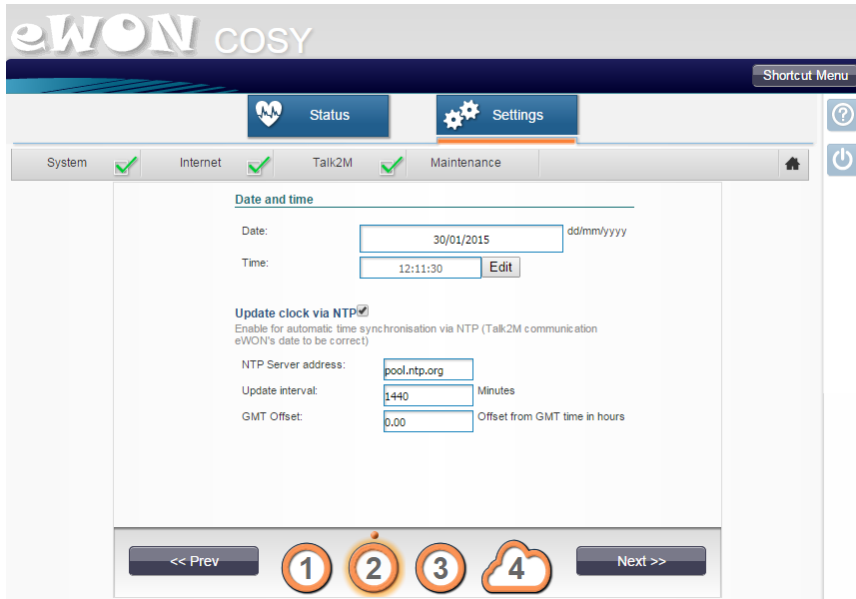


Click on the Quick Launch Wizard button



Enter adm for the user name and adm for the password and then click Next

Remote Diagnostics with the eWON Cosy 131 Quick Start



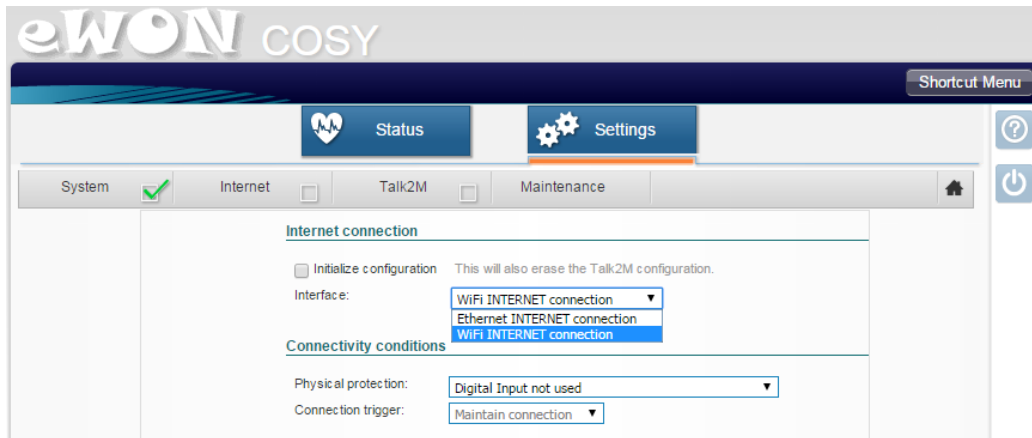
System date and time can be set manually or automatically using NTP on this page.



You can change which port is connected to the WAN but it is suggested that you use the default shown above.

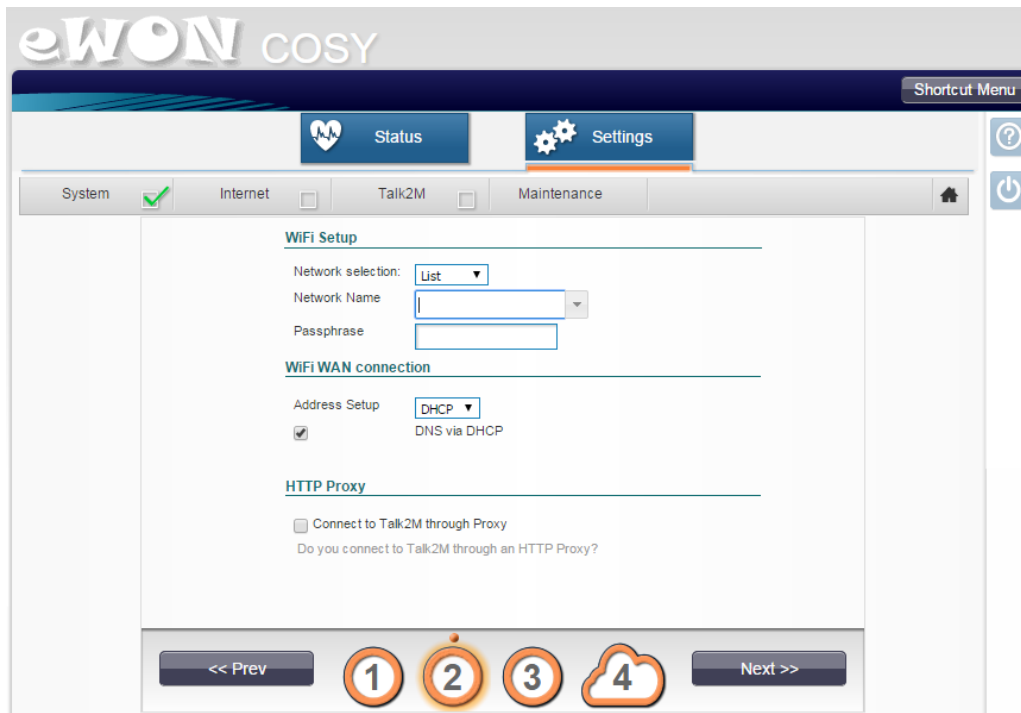
Remote Diagnostics with the eWON Cosy 131 Quick Start

If you have the WiFi model you will see:



The screenshot shows the eWON COSY Settings page. The 'Settings' tab is active. Under the 'Internet' section, there is an 'Initialize configuration' checkbox and a note: 'This will also erase the Talk2M configuration.' Below this is an 'Interface:' dropdown menu with three options: 'WiFi INTERNET connection', 'Ethernet INTERNET connection', and 'WiFi INTERNET connection'. The 'WiFi INTERNET connection' option is selected. Under 'Connectivity conditions', there is a 'Physical protection:' dropdown menu set to 'Digital Input not used' and a 'Connection trigger:' dropdown menu set to 'Maintain connection'.

Select **WiFi INTERNET connection** and press Next



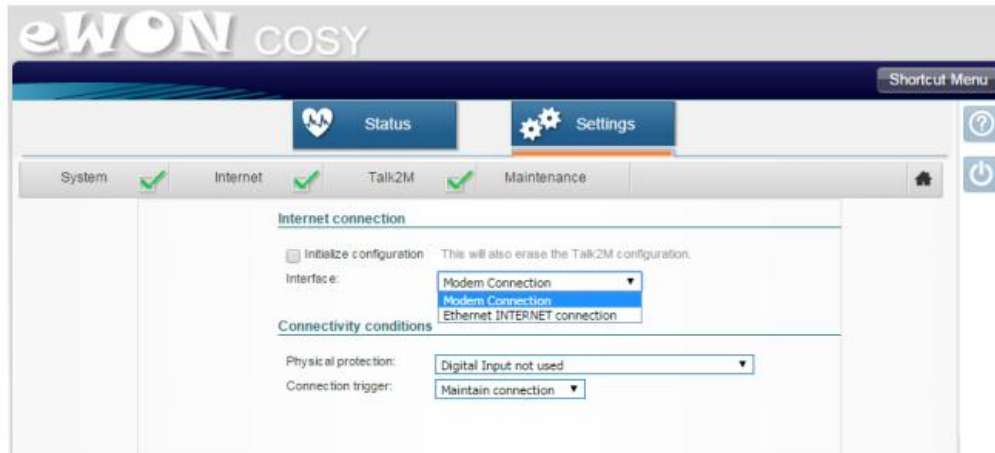
The screenshot shows the eWON COSY WiFi Setup page. The 'WiFi Setup' section has a 'Network selection:' dropdown menu set to 'List'. Below it are 'Network Name' and 'Passphrase' input fields. The 'WiFi WAN connection' section has an 'Address Setup' dropdown menu set to 'DHCP' and a checked checkbox for 'DNS via DHCP'. The 'HTTP Proxy' section has a checkbox for 'Connect to Talk2M through Proxy' which is unchecked, with the text 'Do you connect to Talk2M through an HTTP Proxy?' below it. At the bottom, there are navigation buttons: '<< Prev', a sequence of four numbered circles (1, 2, 3, 4) where circle 2 is highlighted, and 'Next >>'.

Enter the network name and passphrase for your WiFi network and then press Next to test the connection.

Note: Skip Ethernet WAN Configuration section if you have selected to connect using Wi-Fi.

Remote Diagnostics with the eWON Cosy 131 Quick Start

If you have the Cellular model you will see:



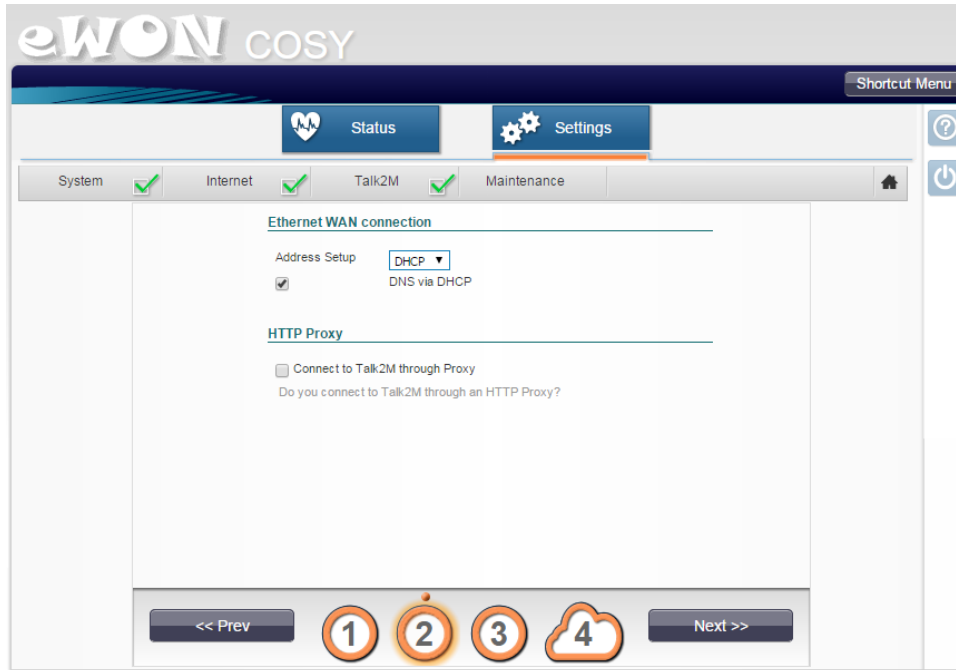
Select **Modem Connection** and press Next



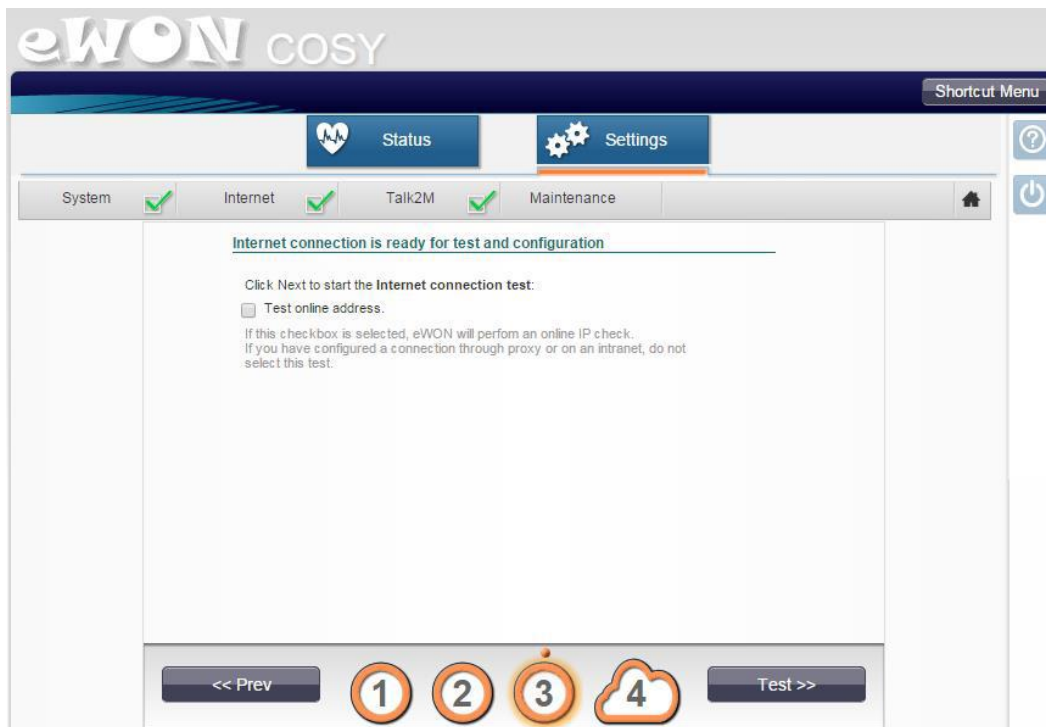
Enter the SIM PIN, APN, Username and Password provided by your cellular network provider. In the advanced settings, session duration can be set to control how long the eWON will maintain a cellular connection. If you want a maintained connection then set the maximum idle time to a large value such as 9999 and set the maximum call duration to 0. With these settings the eWON will maintain a constant internet connection.

Note: Skip Ethernet WAN Configuration section if you have selected to connect using a Modem Connection.

Remote Diagnostics with the eWON Cosy 131 Quick Start

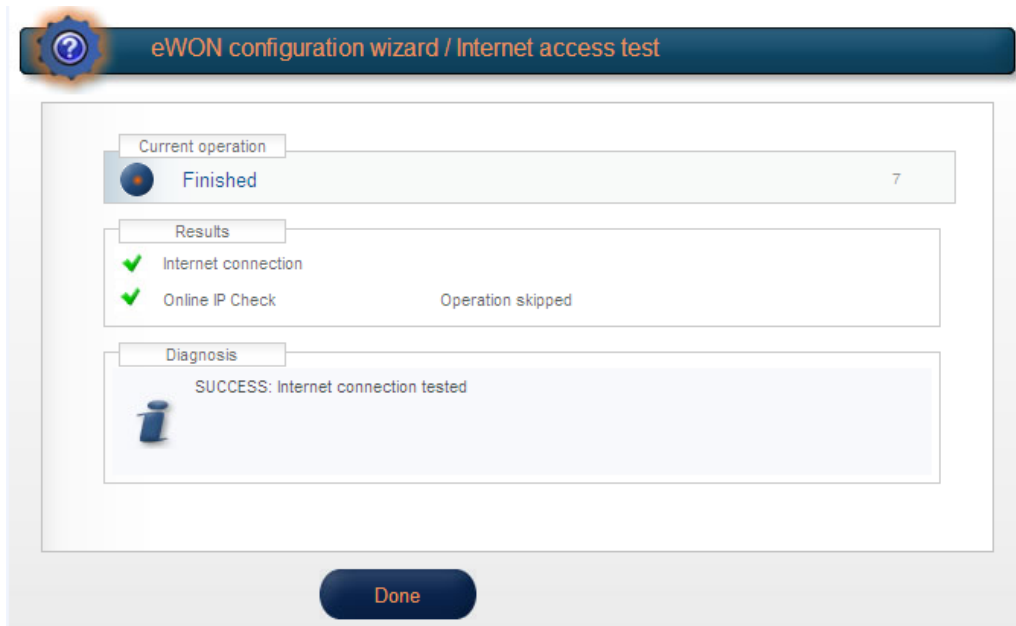


If your access to the Internet uses a Proxy server, check the HTTP Proxy box and enter the Proxy Server settings given to you by your IT department.



Check the test online address box and then click Test

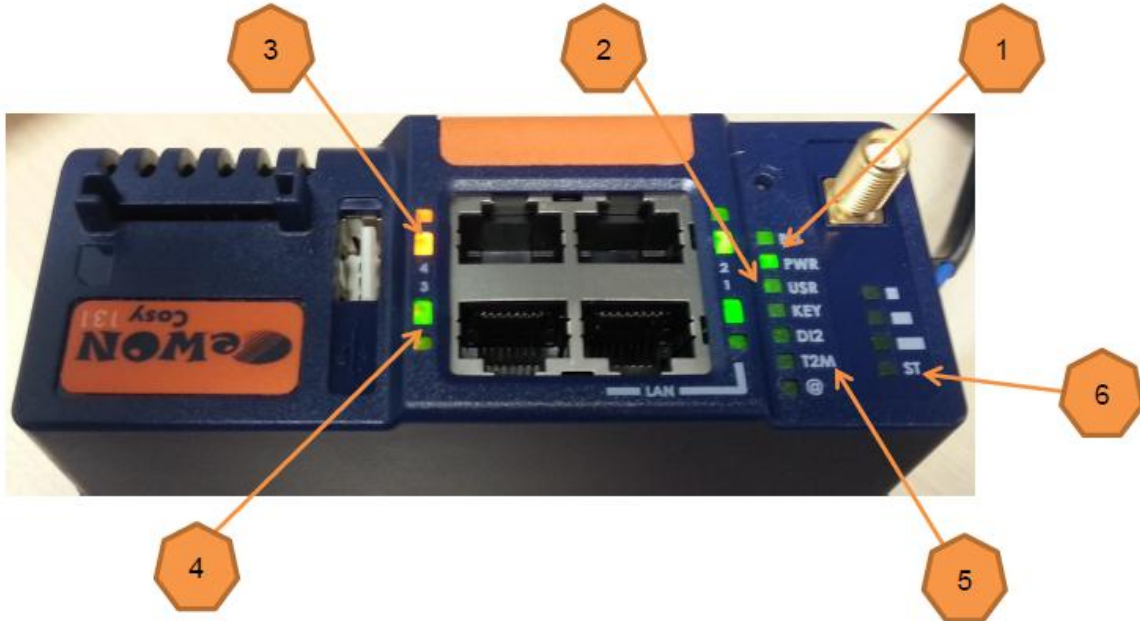
Remote Diagnostics with the eWON Cosy 131 Quick Start



If the test is unsuccessful you should download the eWON Connection Checker software from <http://ftp.ewon.biz/software/eCatcher/Talk2MConnectionChecker.msi> . Install the software and run the connection checker following the onscreen directions.

Remote Diagnostics with the eWON Cosy 131 Quick Start

eWON Diagnostic LEDs



1. Power LED is solid green.
2. USR (User) LED flashes green at a set interval.
3. WAN port LED is solid orange and the small LED flashes orange when communicating.
4. LAN port LED is solid green and the small LED flashes green when communicating.
5. T2M LED is solid green when connected to the Talk2M Service.
6. ST LEDs signify Wi-Fi signal strength.

Remote Diagnostics with the eWON Cosy 131 Quick Start

Appendix A – Changing the LAN IP Address using eBuddy

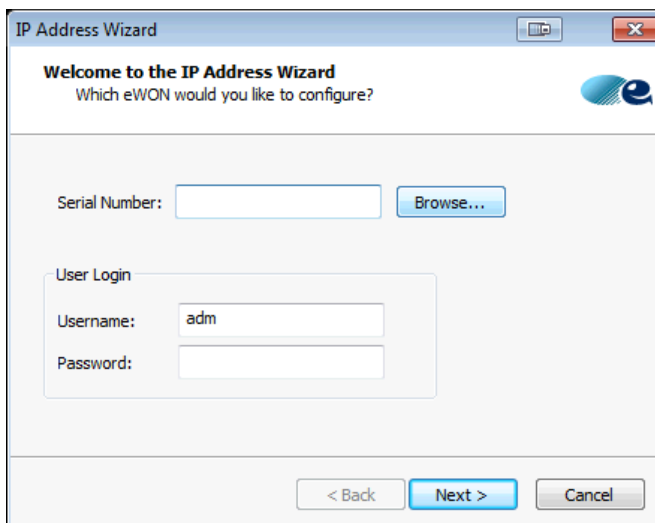
If your machine network is not using the default 192.168.0 subnet you can use eBuddy to change the LAN IP address of the eWON unit. You can obtain eBuddy here:

<http://ftp.ewon.biz/software/eBuddy/eBuddySetup.exe>

Running eBuddy

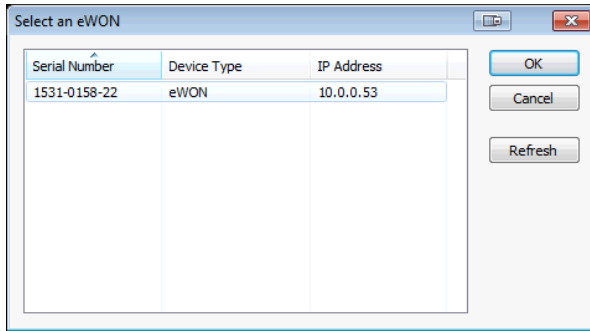
Connect a LAN port of the eWON to your computer

Run eBuddy on your computer and select **Set IP Address**

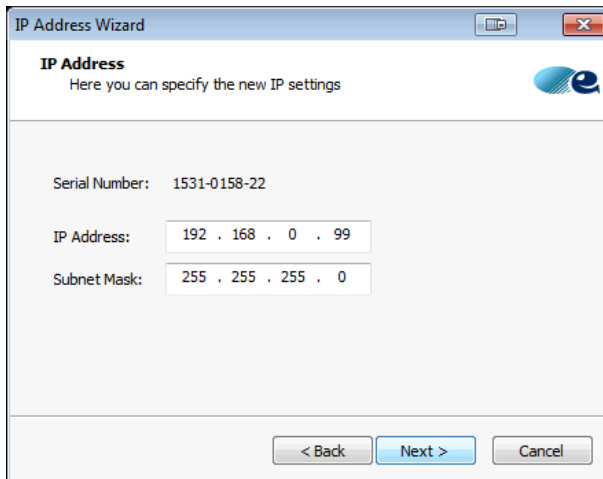


Enter the username and password. Username is adm, Password is adm, then hit Browse button

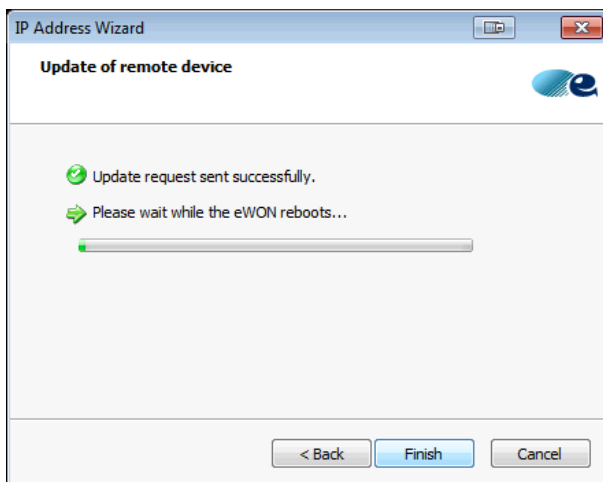
Remote Diagnostics with the eWON Cosy 131 Quick Start



Select the eWON unit and press OK



Enter the desired IP address on the machine network subnet and a subnet mask of 255.255.255.0



Click Finish and the eWON unit will reboot automatically