

Running MotionDesk under Windows 7 in XP Mode

Windows 7 was released with a new feature called XP Mode. XP Mode is a Windows VirtualPC instance with Windows XP Service Pack 3 already installed. Any application installed on this virtual machine can be accessed from the Windows 7 environment as if it was natively installed. If you click on the shortcut for an XP Mode application, it looks like the application is running on Windows 7 but, in fact, it is running in the virtual machine and being presented in an application window under Windows 7 seamlessly. Anything that works on XP should work on this virtual machine. MotionDesk works fine in XP Mode.

Before you can install MotionDesk, you first need to install the XP Mode feature. This feature is not available for the home versions of Windows 7. If you have the Professional, Enterprise, or Ultimate versions of Windows 7 you can download XP Mode from <http://www.microsoft.com/windows/virtual-pc/download.aspx>. Once installed, you can find it on the Start Menu under Windows Virtual PC. Installing MotionDesk itself on the XP Mode virtual machine is no different than installing on non-virtual Windows XP computer.

COM Ports in Windows 7 XP Mode

The easiest way to install MotionDesk and the dial-up-networking configuration is to invoke XP Mode from the start menu. If you restore the XP Mode window (versus using a maximized window) you will have a menu bar that contains a Tools/Settings... command. This menu command allows you to map a physical COM port to the virtual machine. You will need to do that before you can configure the dial-up-networking feature in the XP Mode virtual machine.

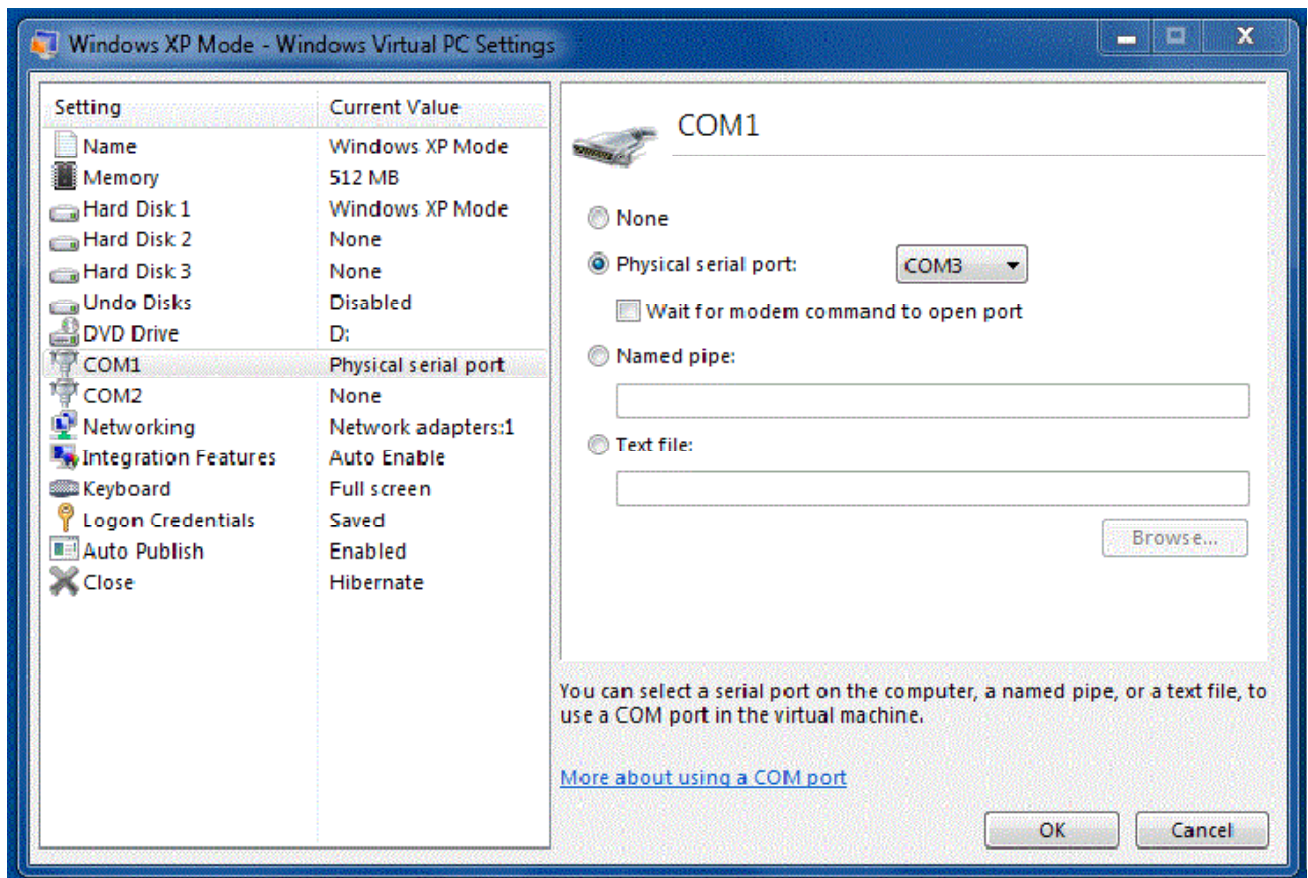


Figure 1 - Configuring the COM port

If your host computer doesn't have a physical COM port but, instead you have a USB-Serial adapter, the best

Running MotionDesk under Windows 7 in XP Mode

method to install that device is to attach the USB device to the virtual machine and install its driver right on the virtual machine. Mapping a virtual COM port created by the USB device driver on the host machine to the virtual machine does not work properly. The only downside to this setup is that each time the virtual machine starts up; you need to remember to attach the USB device to the XP virtual machine again. This is done with the USB menu command on the XP Mode window and clicking on the device name to attach it:

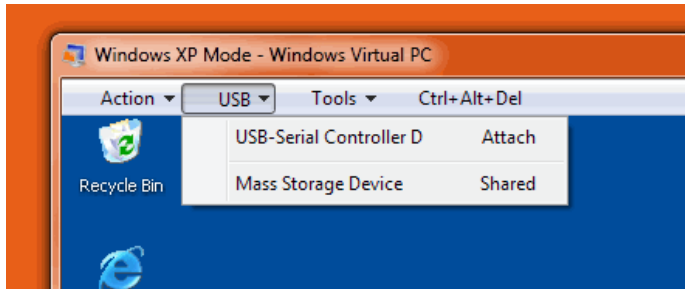


Figure 2 - USB Menu Command on Restored XP Mode Window

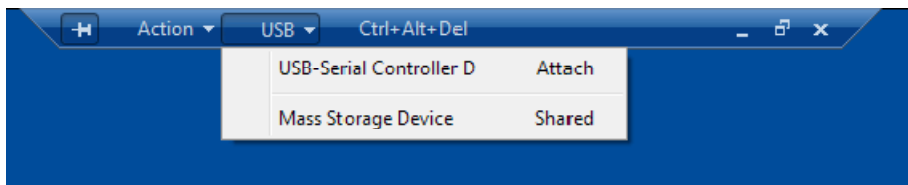


Figure 3 - USB Command on Maximized XP Mode Screen

Once the USB device is attached and the driver is installed, the COM port on the virtual machine operates like any other COM port and you can continue to set up the dial-up networking system as documented in the MotionDesk help system.

If you use MotionDesk in as an XP Mode application versus as an application running on an XP Mode virtual machine (i.e. you do not start up the XP Mode machine first but you start the link to the XP Mode application directly), you'll need to attach the USB device by right-clicking on the task bar icon for MotionDesk and click on "Manage USB Devices":

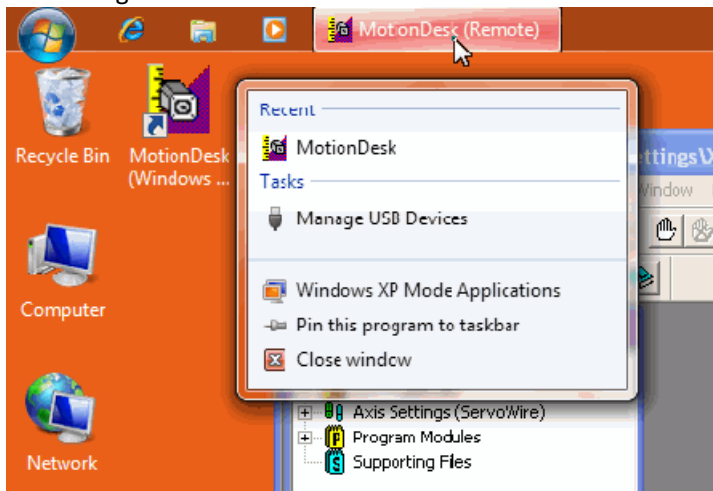


Figure 4 - Selecting Manage USB Devices

Running MotionDesk under Windows 7 in XP Mode

You will then see a box to control the USB devices and you click on the Attach button while highlighting the USB-Serial adapter:



Figure 5 - Manage USB Devices

There appears to be no way to configure an XP Mode application or virtual machine to automatically attach a USB device. However, if running in the application mode versus the full virtual machine, closing down the application does not close down the virtual machine. This means the USB device is still attached if you restart MotionDesk at least until the host computer is rebooted or the user logs off.